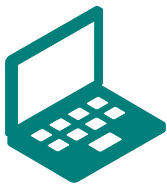


Effective January 1, 2020


SMALL BUSINESS GROUP



## Northern California



For an up-to-date listing,  
please visit [www.healthnet.com](http://www.healthnet.com) >  
**ProviderSearch.**

|  Participating physician groups | Full | WholeCare | SmartCare | Salud HMO y Más |
|--|------|-----------|-----------|-----------------|
| <b>ALAMEDA COUNTY</b>  |      |           |           |                 |
| Affinity Medical Group – Alameda   | ✓    | ✓         |           |                 |
| Brown & Toland Physicians – East Bay   | ✓    |           |           |                 |
| Hill Physicians Medical Group – Alameda  | ✓    | ✓         |           |                 |
| <b>CONTRA COSTA COUNTY</b>   |      |           |           |                 |
| Affinity Medical Group – Contra Costa  | ✓    | ✓         |           |                 |
| Hill Physicians Medical Group – Contra Costa   | ✓    | ✓         |           |                 |
| John Muir Physician Network  | ✓    | ✓         |           |                 |
| Sutter East Bay Medical Group  | ✓    |           |           |                 |
| Sutter East Bay Medical Group – Diablo Division  | ✓    |           |           |                 |
| <b>EL DORADO COUNTY</b>  |      |           |           |                 |
| Marshall Medical Foundation  | ✓    | ✓         |           |                 |
| Mercy Medical Group – El Dorado  | ✓    | ✓         |           |                 |
| <b>FRESNO COUNTY</b>   |      |           |           |                 |
| Healthy Hearts Medical Group DBA Orchard Medical Center  | ✓    | ✓         |           |                 |
| Sante Community Physicians   | ✓    | ✓         |           |                 |
| <b>MADERA COUNTY</b>   |      |           |           |                 |
| Charlie Mitchell Rural Health Clinic   | ✓    |           |           |                 |
| Sante Community Physicians   | ✓    | ✓         |           |                 |
| <b>MARIN COUNTY</b>  |      |           |           |                 |
| Marin Headlands Medical Group  | ✓    |           |           |                 |
| Meritage Medical Network – Marin   | ✓    | ✓         |           |                 |
| <b>MERCED COUNTY</b>   |      |           |           |                 |
| AllCare IPA – Merced   | ✓    | ✓         |           |                 |
| Sutter Gould Medical Foundation – Los Banos  | ✓    |           |           |                 |
| <b>NAPA COUNTY</b>   |      |           |           |                 |
| Meritage Medical Network – Napa  | ✓    | ✓         |           |                 |
| Queen of the Valley Medical Associates   | ✓    |           |           |                 |
| <b>PLACER COUNTY</b>   |      |           |           |                 |
| Hill Physicians Medical Group – Placer   | ✓    | ✓         |           |                 |
| Mercy Medical Group  | ✓    | ✓         |           |                 |
| Sutter Medical Group – Placer Division   | ✓    |           |           |                 |
| UC Davis Medical Group   | ✓    |           |           |                 |
| <b>SACRAMENTO COUNTY</b>   |      |           |           |                 |
| Hill Physicians Medical Group – Sacramento   | ✓    | ✓         |           |                 |
| Mercy Medical Group  | ✓    | ✓         |           |                 |
| Sutter Independent Physicians  | ✓    |           |           |                 |
| Sutter Medical Group – Sacramento Division   | ✓    |           |           |                 |
| UC Davis Medical Group   | ✓    |           |           |                 |
| <b>SAN FRANCISCO COUNTY</b>  |      |           |           |                 |
| Asian American Medical Group   | ✓    | ✓         |           |                 |
| Brown and Toland Physicians  | ✓    |           |           |                 |
| Hill Physicians Medical Group – San Francisco  | ✓    | ✓         |           |                 |
| Hill Physicians Medical Group – San Francisco/UCSF   | ✓    | ✓         |           |                 |
| Sutter West Bay Medical Group  | ✓    |           |           |                 |

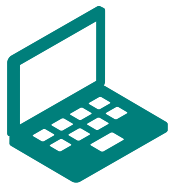
(continued)

**IMPORTANT!** This listing is only a guide and is subject to change. As a rule, PPGs and PCPs affiliate with specific hospitals. **Please confirm that the PPG and or PCP is affiliated with the hospital listed before choosing a PCP.**


Effective January 1, 2020

SMALL BUSINESS GROUP

## Northern California (continued)



For an up-to-date listing,  
please visit [www.healthnet.com](http://www.healthnet.com) >  
**ProviderSearch.**

|  Participating physician groups | Full | WholeCare | SmartCare | Salud HMO y Más |
|--|------|-----------|-----------|-----------------|
| <b>SAN JOAQUIN COUNTY</b>  |      |           |           |                 |
| Community Medical Centers – Waterloo   | ✓    | ✓         |           |                 |
| Hill Physicians Medical Group – San Joaquin  | ✓    | ✓         |           |                 |
| Omni IPA Medical Group, Inc. dba Medcore Medical Group   | ✓    | ✓         |           |                 |
| Sutter Gould Medical Foundation – San Joaquin  | ✓    |           |           |                 |
| <b>SAN MATEO COUNTY</b>  |      |           |           |                 |
| PAMF-MPD/MPMG  | ✓    |           |           |                 |
| <b>SANTA CLARA COUNTY</b>  |      |           |           |                 |
| Affinity Medical Group – South Bay   | ✓    | ✓         |           |                 |
| Palo Alto Medical Foundation   | ✓    |           |           |                 |
| PAMF – Camino Site   | ✓    |           |           |                 |
| Physicians Medical Group of San Jose   | ✓    | ✓         | ✓         |                 |
| Santa Clara County IPA (SCCIPA)  | ✓    | ✓         |           |                 |
| Silicon Valley Medical Development   | ✓    | ✓         | ✓         |                 |
| <b>SANTA CRUZ COUNTY</b>   |      |           |           |                 |
| Dignity Health Medical Network – Santa Cruz  | ✓    | ✓         | ✓         |                 |
| PAMF – Santa Cruz Site   | ✓    |           |           |                 |
| <b>SOLANO COUNTY</b>   |      |           |           |                 |
| Hill Physicians Medical Group – Solano   | ✓    | ✓         |           |                 |
| Sutter Medical Group – Solano Division   | ✓    |           |           |                 |
| <b>SONOMA COUNTY</b>   |      |           |           |                 |
| Meritage Medical Network – Sonoma  | ✓    | ✓         |           |                 |
| North Sonoma County Healthcare District  | ✓    | ✓         |           |                 |
| North Sonoma County Healthcare Services  | ✓    | ✓         |           |                 |
| Sonoma Valley Specialty Clinic   | ✓    | ✓         |           |                 |
| St. Joseph Health Medical Network  | ✓    |           |           |                 |
| Sutter Medical Group of the Redwoods   | ✓    |           |           |                 |
| <b>STANISLAUS COUNTY</b>   |      |           |           |                 |
| AllCare IPA  | ✓    | ✓         |           |                 |
| Emanuel Medical Group  | ✓    | ✓         |           |                 |
| First Choice Physician Partners  | ✓    | ✓         |           |                 |
| Sutter Gould Medical Foundation  | ✓    |           |           |                 |
| <b>YOLO COUNTY</b>   |      |           |           |                 |
| Sutter Medical Group – Yolo Division   | ✓    |           |           |                 |
| UC Davis Medical Group   | ✓    |           |           |                 |
| Woodland Clinic – Davis  | ✓    | ✓         |           |                 |
| Woodland Clinic Medical Group  | ✓    | ✓         |           |                 |

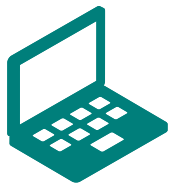
(continued)

**IMPORTANT!** This listing is only a guide and is subject to change. As a rule, PPGs and PCPs affiliate with specific hospitals. **Please confirm that the PPG and or PCP is affiliated with the hospital listed before choosing a PCP.**

Effective January 1, 2020

SMALL BUSINESS GROUP

## Northern California (continued)



For an up-to-date listing,  
please visit [www.healthnet.com](http://www.healthnet.com) >  
**ProviderSearch.**

| Participating hospitals                              | Full | WholeCare | SmartCare | Salud HMO y Más |
|--|------|-----------|-----------|-----------------|
| <b>ALAMEDA COUNTY</b>                                |      |           |           |                 |
| Alameda Hospital                                     | ✓    | ✓         |           |                 |
| Alta Bates Summit Medical Center                     | ✓    |           |           |                 |
| Alta Bates Summit Medical Center – Alta Bates Campus | ✓    |           |           |                 |
| Alta Bates Summit Medical Center – Herrick Campus    | ✓    |           |           |                 |
| Alta Bates Summit Medical Center – Summit Campus     | ✓    |           |           |                 |
| Children’s Hospital – Oakland                        | ✓    | ✓         |           |                 |
| Eden Medical Center                                  | ✓    |           |           |                 |
| San Leandro Hospital                                 | ✓    | ✓         |           |                 |
| St. Rose Hospital                                    | ✓    | ✓         |           |                 |
| Valley Memorial Hospital                             | ✓    | ✓         |           |                 |
| ValleyCare Health System                             | ✓    | ✓         |           |                 |
| Washington Hospital                                  | ✓    | ✓         |           |                 |
| <b>CONTRA COSTA COUNTY</b>                           |      |           |           |                 |
| John Muir Medical Center – Walnut Creek Campus       | ✓    | ✓         |           |                 |
| John Muir Medical Center – Concord Campus            | ✓    | ✓         |           |                 |
| San Ramon Regional Medical Center                    | ✓    | ✓         |           |                 |
| Sutter Delta Medical Center                          | ✓    |           |           |                 |
| <b>EL DORADO COUNTY</b>                              |      |           |           |                 |
| Marshall Medical Center                              | ✓    | ✓         |           |                 |
| <b>FRESNO COUNTY</b>                                 |      |           |           |                 |
| Adventist Medical Center – Selma                     | ✓    | ✓         |           |                 |
| Clovis Community Hospital                            | ✓    | ✓         |           |                 |
| Community Regional Medical Center                    | ✓    | ✓         |           |                 |
| Fresno Heart and Surgical Hospital                   | ✓    | ✓         |           |                 |
| <b>KINGS COUNTY</b>                                  |      |           |           |                 |
| Adventist Medical Center – Hanford                   | ✓    | ✓         |           |                 |
| <b>MADERA COUNTY</b>                                 |      |           |           |                 |
| Madera Community Hospital                            | ✓    | ✓         |           |                 |
| Valley Children’s Hospital                           | ✓    | ✓         |           |                 |
| <b>MARIN COUNTY</b>                                  |      |           |           |                 |
| Marin General Hospital                               | ✓    | ✓         |           |                 |
| Novato Community Hospital                            | ✓    |           |           |                 |
| <b>MERCED COUNTY</b>                                 |      |           |           |                 |
| Mercy Medical Center Merced                          | ✓    | ✓         |           |                 |
| <b>NAPA COUNTY</b>                                   |      |           |           |                 |
| Adventist Health St. Helena                          | ✓    | ✓         |           |                 |
| Queen of the Valley Medical Center                   | ✓    | ✓         |           |                 |
| <b>PLACER COUNTY</b>                                 |      |           |           |                 |
| Mercy General Hospital                               | ✓    |           |           |                 |
| Mercy Hospital of Folsom                             | ✓    |           |           |                 |
| Mercy San Juan Hospital                              | ✓    |           |           |                 |
| Sutter Auburn Faith Hospital                         | ✓    |           |           |                 |
| Sutter Roseville Medical Center                      | ✓    |           |           |                 |
| UC Davis Medical Center                              | ✓    |           |           |                 |

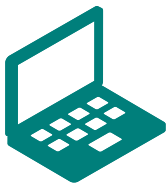
(continued)

**IMPORTANT!** This listing is only a guide and is subject to change. As a rule, PPGs and PCPs affiliate with specific hospitals. **Please confirm that the PPG and or PCP is affiliated with the hospital listed before choosing a PCP.**


Effective January 1, 2020

SMALL BUSINESS GROUP

## Northern California (continued)



For an up-to-date listing,  
please visit [www.healthnet.com](http://www.healthnet.com) >  
**ProviderSearch.**

|  Participating hospitals | Full | WholeCare | SmartCare | Salud HMO y Más |
|---|------|-----------|-----------|-----------------|
| <b>SACRAMENTO COUNTY</b>  |      |           |           |                 |
| Mercy General Hospital  | ✓    | ✓         |           |                 |
| Mercy Hospital of Folsom  | ✓    | ✓         |           |                 |
| Mercy San Juan Medical Center   | ✓    | ✓         |           |                 |
| Methodist Hospital of Sacramento  | ✓    | ✓         |           |                 |
| Sutter Medical Center, Sacramento   | ✓    |           |           |                 |
| UC Davis Medical Center   | ✓    |           |           |                 |
| <b>SAN FRANCISCO COUNTY</b>   |      |           |           |                 |
| California Pacific Medical Center – California Campus   | ✓    |           |           |                 |
| California Pacific Medical Center – Davies Campus   | ✓    |           |           |                 |
| California Pacific Medical Center – Pacific Campus  | ✓    |           |           |                 |
| California Pacific Medical Center – Mission Bernal Campus   | ✓    |           |           |                 |
| California Pacific Medical Center – Van Ness Campus   | ✓    |           |           |                 |
| Chinese Hospital  | ✓    | ✓         |           |                 |
| Saint Francis Memorial Hospital   | ✓    | ✓         |           |                 |
| St Mary’s Medical Center  | ✓    | ✓         |           |                 |
| UCSF Children’s Hospital  | ✓    |           |           |                 |
| UCSF Medical Center   | ✓    | ✓         |           |                 |
| <b>SAN JOAQUIN COUNTY</b>   |      |           |           |                 |
| Adventist Health Lodi Memorial Hospital   | ✓    | ✓         |           |                 |
| Dameron Hospital  | ✓    | ✓         |           |                 |
| Doctors Hospital of Manteca   | ✓    | ✓         |           |                 |
| St. Joseph’s Medical Center   | ✓    | ✓         |           |                 |
| Sutter Tracy Community Hospital   | ✓    |           |           |                 |
| <b>SAN MATEO COUNTY</b>   |      |           |           |                 |
| Mills Health Center   | ✓    |           |           |                 |
| Mills-Peninsula Medical Center  | ✓    |           |           |                 |
| Sequoia Hospital  | ✓    | ✓         |           |                 |
| Seton Medical Center  | ✓    | ✓         |           |                 |
| <b>SANTA CLARA COUNTY</b>   |      |           |           |                 |
| El Camino Hospital  | ✓    | ✓         | ✓         |                 |
| El Camino Hospital – Los Gatos  | ✓    | ✓         | ✓         |                 |
| Good Samaritan Hospital   | ✓    | ✓         | ✓         |                 |
| Lucile Salter Packard Children’s Hospital at Stanford   | ✓    |           |           |                 |
| O’Connor Hospital   | ✓    | ✓         | ✓         |                 |
| Regional Medical Center of San Jose   | ✓    | ✓         | ✓         |                 |
| Saint Louise Regional Hospital  | ✓    | ✓         | ✓         |                 |
| Santa Clara Valley Medical Center   | ✓    | ✓         | ✓         |                 |
| Stanford Health Care  | ✓    |           |           |                 |

(continued)

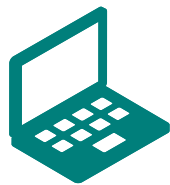
**IMPORTANT!** This listing is only a guide and is subject to change. As a rule, PPGs and PCPs affiliate with specific hospitals. **Please confirm that the PPG and or PCP is affiliated with the hospital listed before choosing a PCP.**

Effective January 1, 2020


SMALL BUSINESS GROUP

## Northern California

(continued)



For an up-to-date listing,  
please visit [www.healthnet.com](http://www.healthnet.com) >  
**ProviderSearch.**

|  Participating hospitals | Full | WholeCare | SmartCare | Salud HMO y Más |
|---|------|-----------|-----------|-----------------|
| <b>SANTA CRUZ COUNTY</b>  |      |           |           |                 |
| Dominican Santa Cruz Hospital   | ✓    | ✓         | ✓         |                 |
| Sutter Maternity and Surgery Center of Santa Cruz   | ✓    |           |           |                 |
| Watsonville Community Hospital  | ✓    | ✓         | ✓         |                 |
| <b>SOLANO COUNTY</b>  |      |           |           |                 |
| NorthBay Medical Center   | ✓    | ✓         |           |                 |
| Sutter Solano Medical Center  | ✓    |           |           |                 |
| VacaValley Hospital   | ✓    | ✓         |           |                 |
| <b>SONOMA COUNTY</b>  |      |           |           |                 |
| Healdsburg District Hospital  | ✓    | ✓         |           |                 |
| Petaluma Valley Hospital  | ✓    |           |           |                 |
| Santa Rosa Memorial Hospital  | ✓    |           |           |                 |
| Sonoma Valley Hospital  | ✓    | ✓         |           |                 |
| Sutter Santa Rosa Regional Hospital   | ✓    |           |           |                 |
| <b>STANISLAUS COUNTY</b>  |      |           |           |                 |
| Doctors Medical Center of Modesto   | ✓    | ✓         |           |                 |
| Emanuel Medical Center  | ✓    | ✓         |           |                 |
| Memorial Medical Center – Modesto   | ✓    |           |           |                 |
| Oak Valley District Hospital  | ✓    | ✓         |           |                 |
| Stanislaus Surgical Hospital  | ✓    | ✓         |           |                 |
| <b>YOLO COUNTY</b>  |      |           |           |                 |
| Sutter Davis Hospital   | ✓    |           |           |                 |
| Woodland Memorial Hospital  | ✓    | ✓         |           |                 |

**IMPORTANT!** This listing is only a guide and is subject to change. As a rule, PPGs and PCPs affiliate with specific hospitals. **Please confirm that the PPG and or PCP is affiliated with the hospital listed before choosing a PCP.**

## Definition of Terms



### Participating Physician Group (PPG)

A group of doctors, set up as a legal entity, that has an agreement with Health Net to provide medical care to Health Net members. PPGs are sometimes referred to as a

“contracting physician group” or a “medical group.” An individual practice association may also be a PPG.



### Primary Care Physician (PCP)

A doctor who manages and directs the delivery of covered health care services and supplies to the member. PCPs include general and family practitioners, internists, pediatricians, obstetricians and gynecologists.



### Participating Hospitals

A member’s PCP may need to refer them to a hospital for further care.

The PCP will refer the member to a hospital where the PCP has admitting privileges. Log in to [www.healthnet.com/ProviderSearch](http://www.healthnet.com/ProviderSearch) for a list of hospitals where the PCP has admitting privileges.

**Note:** Members must first contact their PCP for medical care and advice before they receive treatment through a hospital. The PCP must authorize hospital admission and treatment.

***In an emergency, the member should call 911 or go to the nearest ER.***



### Full and WholeCare HMO Networks

Available in all or parts of Alameda, Contra Costa, El Dorado, Fresno, Kern, Kings, Los Angeles, Madera, Marin, Merced, Napa, Nevada, Orange, Placer, Riverside, Sacramento, San Bernardino, San Diego, San Francisco, San Joaquin, San Mateo, Santa Barbara, Santa Clara, Santa Cruz, Solano, Sonoma, Stanislaus, Tulare, Ventura, and Yolo counties.



### SmartCare HMO Network

Available in all or parts of Los Angeles, Orange, Riverside, San Bernardino, San Diego, Santa Clara, and Santa Cruz counties.



### Salud HMO y Más Network

Available in Orange County and select ZIP codes of Kern, Los Angeles, Riverside, San Bernardino, and San Diego counties.

**IMPORTANT!** This listing is only a guide and is subject to change. As a rule, PPGs and PCPs affiliate with specific hospitals.

**Please confirm that the PPG and or PCP is affiliated with the hospital listed before choosing a PCP.**

**For more information, please contact:**

**CUSTOMER CONTACT CENTER**

1-800-522-0088

**HealthNet.com**