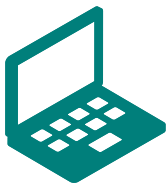


Effective January 1, 2020

SMALL BUSINESS GROUP



San Bernardino County



For an up-to-date listing,
please visit www.healthnet.com >
ProviderSearch.

Participating physician groups	Full	WholeCare	SmartCare	Salud HMO y Más
Alliance Desert Physicians	✓	✓	✓	
Beaver Medical Group	✓	✓	✓	
Beaver Medical Group – BAHC	✓	✓	✓	
Beaver Medical Group – Cooley Ranch office	✓	✓	✓	
Beaver Medical Group – Highland office	✓	✓	✓	
Beaver Medical Group – Yucaipa office	✓	✓	✓	
Chaffey Medical Group	✓	✓	✓	
Choice Medical Group, Inc.	✓	✓		
Desert Valley Medical Group, Inc.	✓			
Dignity Health Medical Group – Inland Empire	✓	✓	✓	✓
Fenix Health Medical Group	✓	✓	✓	
LaSalle Medical Associates – San Bernardino	✓	✓	✓	✓
My Family Medical Group	✓	✓	✓	
Pinnacle Medical Group	✓	✓	✓	
Pomona Valley Medical Group, Inc.	✓			
Premier Healthcare IPA/SJHH	✓	✓	✓	
PrimeCare Medical Group of Chino Valley	✓	✓	✓	
PrimeCare Medical Group of Inland Valley, Inc.	✓	✓	✓	
PrimeCare Medical Group of Moreno Valley	✓	✓	✓	
PrimeCare Medical Group of Redlands, Inc.	✓	✓	✓	
PrimeCare Medical Group of San Bernardino, Inc.	✓	✓	✓	
PrimeCare of Citrus Valley, Inc.	✓	✓	✓	
PrimeCare San Bernardino – SBMG	✓	✓	✓	
PrimceCare San Bernardino – Sierra Lakes	✓	✓	✓	
Redlands – Yucaipa Medical Group	✓	✓	✓	
Regal Medical Group of San Bernardino County	✓	✓		
St. Mary High Desert Medical Group/SJHH	✓	✓	✓	
Upland Medical Group	✓	✓		
Valley Physicians Network, Inc.	✓	✓	✓	
Vantage Medical Group – SB	✓	✓		
Victor Valley Medical Group	✓	✓		

(continued)

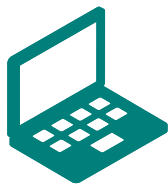
IMPORTANT! This listing is only a guide and is subject to change. As a rule, PPGs and PCPs affiliate with specific hospitals. **Please confirm that the PPG and or PCP is affiliated with the hospital listed before choosing a PCP.**

Effective January 1, 2020


SMALL BUSINESS GROUP

San Bernardino County

(continued)



For an up-to-date listing,
please visit www.healthnet.com >
ProviderSearch.

 Participating hospitals	Full	WholeCare	SmartCare	Salud HMO y Más
Barstow Community Hospital	✓	✓		
Bear Valley Community Healthcare District	✓	✓		
Community Hospital of San Bernardino	✓	✓	✓	✓
Desert Valley Hospital	✓			
Hi-Desert Memorial Health Care District	✓	✓		
Loma Linda University Community Hospital	✓	✓	✓	
Mountains Community Hospital	✓	✓		
Redlands Community Hospital	✓	✓	✓	
San Antonio Regional Hospital	✓	✓	✓	
St. Bernardine Medical Center	✓	✓	✓	
St. Mary Medical Center	✓	✓	✓	

IMPORTANT! This listing is only a guide and is subject to change. As a rule, PPGs and PCPs affiliate with specific hospitals. **Please confirm that the PPG and or PCP is affiliated with the hospital listed before choosing a PCP.**

Definition of Terms



Participating Physician Group (PPG)

A group of doctors, set up as a legal entity, that has an agreement with Health Net to provide medical care to Health Net members. PPGs are sometimes referred to as a

“contracting physician group” or a “medical group.” An individual practice association may also be a PPG.



Primary Care Physician (PCP)

A doctor who manages and directs the delivery of covered health care services and supplies to the member. PCPs include general and family practitioners, internists, pediatricians, obstetricians and gynecologists.



Participating Hospitals

A member’s PCP may need to refer them to a hospital for further care.

The PCP will refer the member to a hospital where the PCP has admitting privileges. Log in to www.healthnet.com/ProviderSearch for a list of hospitals where the PCP has admitting privileges.

Note: Members must first contact their PCP for medical care and advice before they receive treatment through a hospital. The PCP must authorize hospital admission and treatment.

In an emergency, the member should call 911 or go to the nearest ER.



Full and WholeCare HMO Networks

Available in all or parts of Alameda, Contra Costa, El Dorado, Fresno, Kern, Kings, Los Angeles, Madera, Marin, Merced, Napa, Nevada, Orange, Placer, Riverside, Sacramento, San Bernardino, San Diego, San Francisco, San Joaquin, San Mateo, Santa Barbara, Santa Clara, Santa Cruz, Solano, Sonoma, Stanislaus, Tulare, Ventura, and Yolo counties.



SmartCare HMO Network

Available in all or parts of Los Angeles, Orange, Riverside, San Bernardino, San Diego, Santa Clara, and Santa Cruz counties.



Salud HMO y Más Network

Available in Orange County and select ZIP codes of Kern, Los Angeles, Riverside, San Bernardino, and San Diego counties.

IMPORTANT! This listing is only a guide and is subject to change. As a rule, PPGs and PCPs affiliate with specific hospitals.

Please confirm that the PPG and or PCP is affiliated with the hospital listed before choosing a PCP.

For more information, please contact:

CUSTOMER CONTACT CENTER

1-800-522-0088

HealthNet.com