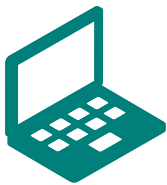


Effective January 1, 2020

SMALL BUSINESS GROUP



San Diego County



For an up-to-date listing,
please visit www.healthnet.com >
ProviderSearch.

 Participating physician groups	Full	WholeCare	SmartCare	Salud HMO y Más
Arch Health Partners				✓
Cassidy Medical Group	✓	✓		✓
Greater Tri-Cities IPA	✓	✓		✓
Mercy Physicians Medical Group	✓	✓		
Mid-County Physicians Medical Group	✓	✓		✓
Noble AMA IPA	✓	✓		
Primary Care Associated Medical Group	✓	✓		✓
Rady Children's Health Network	✓	✓	✓	✓
Scripps Clinic – Anderson	✓			
Scripps Clinic – Carmel Valley	✓			
Scripps Clinic – Del Mar	✓			
Scripps Clinic – Encinitas	✓			
Scripps Clinic – La Jolla	✓			
Scripps Clinic – Liberty Station	✓			
Scripps Clinic – Mission Valley	✓			
Scripps Clinic – Rancho Bernardo	✓			
Scripps Clinic – Rancho San Diego	✓			
Scripps Clinic – Santee	✓			
Scripps Clinic – Torrey Pines	✓			
Scripps Coastal Medical Center – Carlsbad	✓			
Scripps Coastal Medical Center – Eastlake	✓			
Scripps Coastal Medical Center – Encinitas	✓			
Scripps Coastal Medical Center – Escondido	✓			
Scripps Coastal Medical Center – Hillcrest	✓			
Scripps Coastal Medical Center – Oceanside	✓			
Scripps Coastal Medical Center – Solana Beach	✓			
Scripps Coastal Medical Center – Vista	✓			
Scripps Physicians Medical Group	✓	✓		✓
Sharp Community Medical Group – Arch	✓	✓	✓	
Sharp Community Medical Group – Graybill	✓	✓	✓	
Sharp Community Medical Group – Inland North	✓	✓	✓	
Sharp Community Medical Group at San Diego	✓	✓	✓	
Sharp Rees-Stealy Medical Group	✓	✓	✓	
Sharp Rees-Stealy Medical Group – Chula Vista	✓	✓	✓	
Sharp Rees-Stealy Medical Group – La Mesa	✓	✓	✓	
Sharp Rees-Stealy Medical Group – Mira Mesa	✓	✓	✓	
Sharp Rees-Stealy Medical Group – Rancho Bernardo	✓	✓	✓	
Sharp Rees-Stealy Medical Group – San Diego	✓	✓	✓	
UC San Diego Health – Downtown – Internal Med	✓	✓		

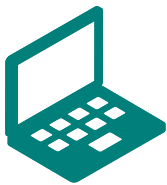
(continued)

IMPORTANT! This listing is only a guide and is subject to change. As a rule, PPGs and PCPs affiliate with specific hospitals. **Please confirm that the PPG and or PCP is affiliated with the hospital listed before choosing a PCP.**


Effective January 1, 2020


SMALL BUSINESS GROUP

San Diego County (continued)



For an up-to-date listing,
please visit www.healthnet.com >
ProviderSearch.

 Participating physician groups	Full	WholeCare	SmartCare	Salud HMO y Más
UC San Diego Health – Eastlake – Family Med	✓	✓		
UC San Diego Health – Encinitas – Internal Med	✓	✓		
UC San Diego Health – Hillcrest – Family Med	✓	✓		
UC San Diego Health – Hillcrest – Internal Med	✓	✓		
UC San Diego Health – Hillcrest – Owens Clinic	✓	✓		
UC San Diego Health – Kearney Mesa – Pediatric Med	✓	✓		
UC San Diego Health – La Jolla – Family Med	✓	✓		
UC San Diego Health – La Jolla – Geriatrics	✓	✓		
UC San Diego Health – La Jolla – Internal Med	✓	✓		
UC San Diego Health – La Jolla – Pediatric Med	✓	✓		
UC San Diego Health – One Medical Carlsbad	✓	✓		
UC San Diego Health – One Medical Downtown	✓	✓		
UC San Diego Health – One Medical La Jolla	✓	✓		
UC San Diego Health – Rancho Bernardo – Family Med	✓	✓		
UC San Diego Health – Scripps Ranch – Family Med	✓	✓		
UC San Diego Health – Sorrento Valley – Internal Med	✓	✓		
UC San Diego Health – Vista – Internal Med	✓	✓		
UCSD Healthcare Network	✓	✓		
Vantage Medical Group – San Diego	✓	✓		

 Participating hospitals	Full	WholeCare	SmartCare	Salud HMO y Más
Alvarado Hospital Medical Center	✓			
Palomar Medical Center – Downtown Escondido	✓	✓	✓	✓
Palomar Medical Center – Escondido	✓	✓	✓	
Palomar Medical Center – Poway	✓	✓	✓	✓
Rady Children’s Hospital – San Diego	✓	✓	✓	✓
Scripps Green Hospital	✓	✓		✓
Scripps Memorial Hospital – Encinitas	✓	✓		✓
Scripps Memorial Hospital – La Jolla	✓	✓		✓
Scripps Mercy Hospital	✓	✓		✓
Scripps Mercy Hospital – Chula Vista	✓	✓		✓
Sharp Chula Vista Medical Center	✓	✓	✓	
Sharp Coronado Hospital and Healthcare Center	✓	✓	✓	
Sharp Grossmont Hospital	✓	✓	✓	
Sharp Mary Birch Hospital for Women and Newborns	✓	✓	✓	
Sharp Memorial Hospital	✓	✓	✓	
Tri-City Medical Center	✓	✓		✓
UCSD Medical Center – Hillcrest	✓	✓		✓
UCSD Thornton Hospital	✓	✓		✓

IMPORTANT! This listing is only a guide and is subject to change. As a rule, PPGs and PCPs affiliate with specific hospitals. **Please confirm that the PPG and or PCP is affiliated with the hospital listed before choosing a PCP.**

Definition of Terms



Participating Physician Group (PPG)

A group of doctors, set up as a legal entity, that has an agreement with Health Net to provide medical care to Health Net members. PPGs are sometimes referred to as a

“contracting physician group” or a “medical group.” An individual practice association may also be a PPG.



Primary Care Physician (PCP)

A doctor who manages and directs the delivery of covered health care services and supplies to the member. PCPs include general and family practitioners, internists, pediatricians, obstetricians and gynecologists.



Participating Hospitals

A member’s PCP may need to refer them to a hospital for further care.

The PCP will refer the member to a hospital where the PCP has admitting privileges. Log in to www.healthnet.com/ProviderSearch for a list of hospitals where the PCP has admitting privileges.

Note: Members must first contact their PCP for medical care and advice before they receive treatment through a hospital. The PCP must authorize hospital admission and treatment.

In an emergency, the member should call 911 or go to the nearest ER.



Full and WholeCare HMO Networks

Available in all or parts of Alameda, Contra Costa, El Dorado, Fresno, Kern, Kings, Los Angeles, Madera, Marin, Merced, Napa, Nevada, Orange, Placer, Riverside, Sacramento, San Bernardino, San Diego, San Francisco, San Joaquin, San Mateo, Santa Barbara, Santa Clara, Santa Cruz, Solano, Sonoma, Stanislaus, Tulare, Ventura, and Yolo counties.



SmartCare HMO Network

Available in all or parts of Los Angeles, Orange, Riverside, San Bernardino, San Diego, Santa Clara, and Santa Cruz counties.



Salud HMO y Más Network

Available in Orange County and select ZIP codes of Kern, Los Angeles, Riverside, San Bernardino, and San Diego counties.

IMPORTANT! This listing is only a guide and is subject to change. As a rule, PPGs and PCPs affiliate with specific hospitals.

Please confirm that the PPG and or PCP is affiliated with the hospital listed before choosing a PCP.

For more information, please contact:

CUSTOMER CONTACT CENTER

1-800-522-0088

HealthNet.com