

Looking for a doctor?

Finding one online is fast and easy

The right doctor can make all the difference — and choosing one in your plan can save you money, too. Our **Find a Doctor** tool helps you find doctors, dentists, hospitals, labs and other health care providers in your plan. If you decide to get care from doctors outside the plan, it'll cost you more and your care might not be covered at all.



Here's all you need to do to find a doctor near you:

1

Go to anthem.com/ca/find-doctor

2

You can look for a doctor by using either:

- **Search as a member:** Log in with a username and password or with the member number on your ID card.
- **Search as guest:** Select a plan or network,* or search by all plans and networks, to get started.

3

Once you log in, select the **Find Care** option on the welcome menu.

4

Next, choose who you'd like to see. You can search for a doctor nearby or use the doctor's name.

5

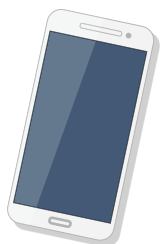
Select a provider to get details, like:

- Specialties
- Gender
- Languages spoken
- Training
- A map of their office location
- Phone number

Going mobile

Search for doctors, hospitals and more on your smartphone or mobile device.

And don't forget that going mobile keeps everything you need to know about your plan — including medical, pharmacy, dental, vision, life insurance — in one place. It's simple, personal and all about you. Simply download the **Sydney** app to get started.



*If you don't know the name of the plan or network, check with your human resources department or benefits administrator.

Anthem Blue Cross is the trade name of Blue Cross of California. Anthem Blue Cross and Anthem Blue Cross Life and Health Insurance Company are independent licensees of the Blue Cross Association. Anthem is a registered trademark of Anthem Insurance Companies, Inc.