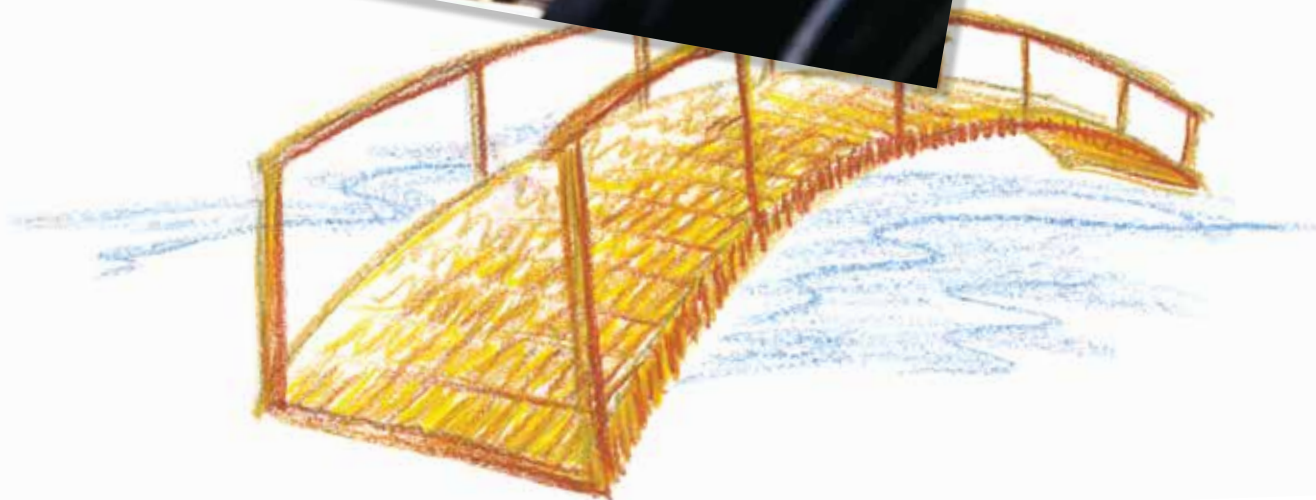


# Network Comparison List

Effective February 1, 2018



**Geoffrey Gomez,**  
**Health Net**  
*Keeping our members  
informed with all the  
latest plan updates.*





# Definition of Terms

## **Participating Physician Group (PPG) –**

A group of physicians, who are organized as a legal entity, that has an agreement in effect with Health Net to provide medical care to Health Net members. They are sometimes referred to as a “contracting physician group” or a “medical group.” An individual practice association may also be a physician group.

**Primary Care Physician (PCP) –** A physician who coordinates and controls the delivery of covered services and supplies to the member. PCPs include general and family practitioners, internists, pediatricians, and obstetricians/gynecologists.

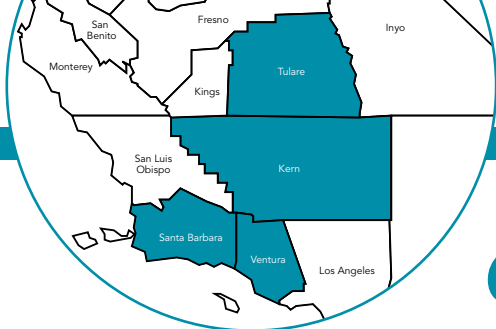
**Participating Hospitals –** A member’s PCP may find it necessary to refer the member to a hospital for further care on either an inpatient or outpatient basis. The member will usually be hospitalized where the PCP has admitting privileges. Log in to [www.healthnet.com/providersearch](http://www.healthnet.com/providersearch) for a list of hospitals where the PCP has admitting privileges. **Note:** The PCP must first be contacted for initial treatment and consultation before you receive any care or treatment through a hospital. Admission to, and treatment rendered by, any hospital must be authorized by your selected PCP. **If you feel that you are experiencing an emergency, call 911 immediately or go to the nearest ER.**

## **Full and WholeCare HMO networks –**

Available in all or parts of Alameda, Alpine, Amador, Butte, Calaveras, Colusa, Contra Costa, Del Norte, El Dorado, Fresno, Glenn, Humboldt, Kern, Kings, Lake, Lassen, Los Angeles, Madera, Mariposa, Marin, Mendocino, Merced, Modoc, Monterey, Napa, Nevada, Orange, Placer, Plumas, Riverside, Sacramento, San Benito, San Bernardino, San Diego, San Francisco, San Joaquin, San Luis Obispo, San Mateo, Santa Barbara, Santa Clara, Santa Cruz, Shasta, Sierra, Siskiyou, Solano, Sonoma, Stanislaus, Sutter, Tehama, Trinity, Tulare, Tuolumne, Ventura, Yolo, and Yuba counties.

**SmartCare HMO Network –** Available in all or parts of Los Angeles, Marin, Orange, Riverside, San Bernardino, San Diego, Santa Clara, and Santa Cruz counties.

**Salud HMO y Más Network –** Available in Orange County and select ZIP codes of Kern, Los Angeles, Riverside, San Diego, and San Bernardino counties.



# Central California



This listing is a general guide only and is subject to change. For an up-to-date listing, please visit [www.healthnet.com](http://www.healthnet.com) > [ProviderSearch](#).

Participating physician groups	Full	WholeCare	SmartCare	Salud HMO y Más
<b>Kern County</b>				
Bakersfield Family Medical Center – Heritage Physician Network	✓	✓		
Delano Regional Medical Group	✓	✓		
Golden Empire Managed Care IPA	✓	✓		
Independence Medical Group	✓	✓		✓
Physicians Choice Medical Group of Santa Maria	✓			
<b>Santa Barbara County</b>				
Jackson Medical Group – Goleta	✓	✓		
Physicians Choice Medical Group of Santa Maria	✓			
Sansum Clinic – 1225 North H St	✓	✓		
Sansum Clinic – 51 Hitchcock Way	✓	✓		
Sansum Clinic – SBIMG	✓	✓		
<b>Tulare County</b>				
Family Healthcare Network – Cutler-Orosi	✓	✓		
Family Healthcare Network – Farmersville	✓	✓		
Family Healthcare Network – Goshen	✓	✓		
Family Healthcare Network – Ivanhoe	✓	✓		
Family Healthcare Network – School	✓	✓		
Family Healthcare Network – Springville	✓	✓		
Family Healthcare Network – Terra Bella	✓	✓		
Family Healthcare Network – Three Rivers	✓	✓		
Family Healthcare Network – Traver	✓	✓		
Family HealthCare Network – Tulare	✓	✓		
Family HealthCare Network – Tulare Pediatrics	✓	✓		
Family Healthcare Network – Visalia	✓	✓		
Family Healthcare Network – Visalia Oak	✓	✓		
Family Healthcare Network – Woodlake	✓	✓		
Healthy Hearts Medical Group DBA Orchard Medical Center	✓	✓		
Kaweah Delta Dinuba Health Clinic	✓	✓		
Kaweah Delta Exeter Health Clinic	✓	✓		
Kaweah Delta Lindsay Health Clinic	✓	✓		
Kaweah Delta Medical Foundation	✓	✓		
Kaweah Delta Woodlake Health Clinic	✓	✓		
Key Medical Group, Inc.	✓	✓		
Salas Medical Clinic, Inc.	✓			✓
United Health Centers – Earlimart	✓			
<b>Ventura County</b>				
Facey Medical Foundation – Simi Valley	✓	✓		
Pioneer Provider Network, A Medical Group, Inc.	✓	✓		
Regal Medical Group – Ventura	✓	✓		
Santa Barbara Select IPA Medical Group	✓			
Seaview IPA	✓	✓		
Valley Care IPA	✓	✓		
Valley Care Select IPA	✓	✓		

(continued)

## Central California (continued)

**Important!** This listing is a general guide only and is subject to change. It's important to note that PPGs and PCPs typically affiliate with specific hospitals. **Please confirm that the PPG and/or PCP is affiliated with the hospital listed prior to selecting a PCP.**

<i>Participating hospitals</i>	<i>Full</i>	<i>WholeCare</i>	<i>SmartCare</i>	<i>Salud HMO y Más</i>
<b>Kern County</b>				
Bakersfield Heart Hospital	✓	✓		
Bakersfield Memorial Hospital	✓	✓		
Delano Regional Medical Center	✓	✓		
Good Samaritan Hospital	✓	✓		
Kern Medical Center	✓	✓		✓
Mercy Hospital	✓	✓		
Mercy Hospital Bakersfield	✓	✓		
Ridgecrest Regional Hospital	✓	✓		
San Joaquin Community Hospital	✓	✓		✓
<b>Santa Barbara County</b>				
Goleta Valley Cottage Hospital	✓			
Lompoc Valley Medical Center	✓	✓		
Marian Medical Center	✓			
Santa Barbara Cottage Hospital	✓	✓		
Santa Ynez Valley Cottage Hospital	✓			
<b>Tulare County</b>				
Kaweah Delta District Hospital	✓	✓		
Sierra View District Hospital	✓	✓		
<b>Ventura County</b>				
Community Memorial Hospital of San Buenaventura	✓	✓		
Los Robles Regional Medical Center	✓			
Ojai Valley Community Hospital	✓	✓		
Santa Paula Hospital	✓	✓		
Simi Valley Hospital and Health Care Services	✓	✓		
St. John's Pleasant Valley Hospital	✓	✓		
St. John's Regional Medical Center	✓	✓		
Ventura County Medical Center	✓	✓		

*For more information, please contact:*

**Customer Contact Center**

1-800-522-0088

*[www.healthnet.com](http://www.healthnet.com)*

**Important!** This listing is a general guide only and is subject to change. It's important to note that PPGs and PCPs typically affiliate with specific hospitals. **Please confirm that the PPG and/or PCP is affiliated with the hospital listed prior to selecting a PCP.**