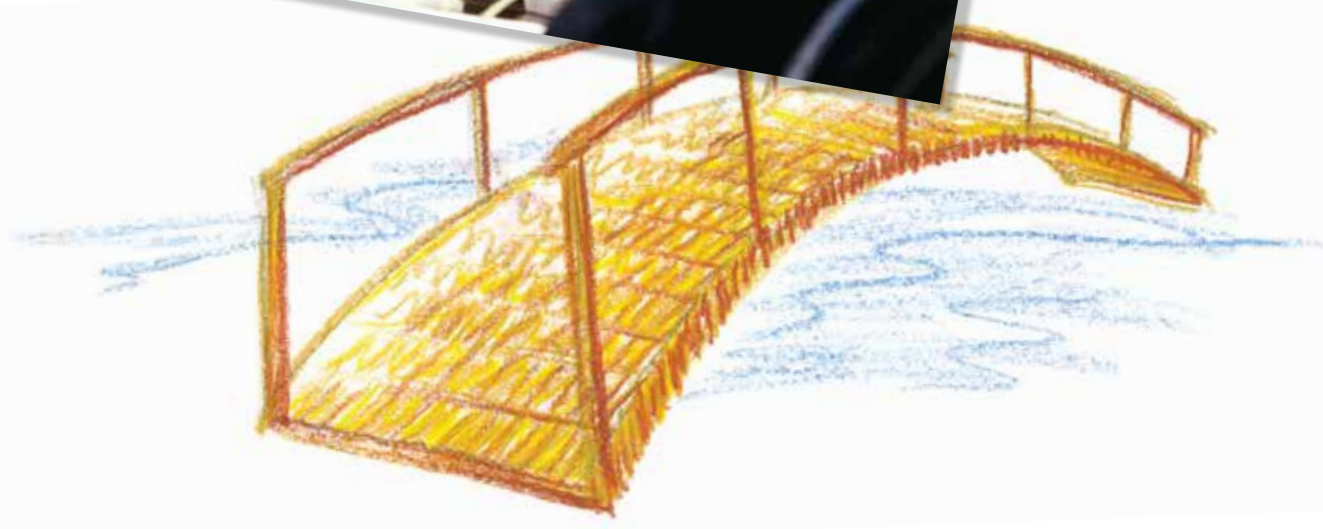


Network Comparison List

Effective February 1, 2018



Geoffrey Gomez,
Health Net
*Keeping our members
informed with all the
latest plan updates.*





Definition of Terms

Participating Physician Group (PPG) –

A group of physicians, who are organized as a legal entity, that has an agreement in effect with Health Net to provide medical care to Health Net members. They are sometimes referred to as a “contracting physician group” or a “medical group.” An individual practice association may also be a physician group.

Primary Care Physician (PCP) – A physician who coordinates and controls the delivery of covered services and supplies to the member. PCPs include general and family practitioners, internists, pediatricians, and obstetricians/gynecologists.

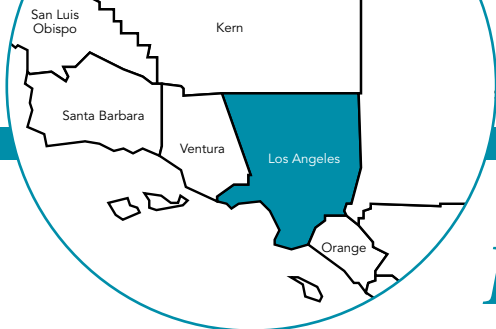
Participating Hospitals – A member’s PCP may find it necessary to refer the member to a hospital for further care on either an inpatient or outpatient basis. The member will usually be hospitalized where the PCP has admitting privileges. Log in to www.healthnet.com/providersearch for a list of hospitals where the PCP has admitting privileges. **Note:** The PCP must first be contacted for initial treatment and consultation before you receive any care or treatment through a hospital. Admission to, and treatment rendered by, any hospital must be authorized by your selected PCP. **If you feel that you are experiencing an emergency, call 911 immediately or go to the nearest ER.**

Full and WholeCare HMO networks –

Available in all or parts of Alameda, Alpine, Amador, Butte, Calaveras, Colusa, Contra Costa, Del Norte, El Dorado, Fresno, Glenn, Humboldt, Kern, Kings, Lake, Lassen, Los Angeles, Madera, Mariposa, Marin, Mendocino, Merced, Modoc, Monterey, Napa, Nevada, Orange, Placer, Plumas, Riverside, Sacramento, San Benito, San Bernardino, San Diego, San Francisco, San Joaquin, San Luis Obispo, San Mateo, Santa Barbara, Santa Clara, Santa Cruz, Shasta, Sierra, Siskiyou, Solano, Sonoma, Stanislaus, Sutter, Tehama, Trinity, Tulare, Tuolumne, Ventura, Yolo, and Yuba counties.

SmartCare HMO Network – Available in all or parts of Los Angeles, Marin, Orange, Riverside, San Bernardino, San Diego, Santa Clara, and Santa Cruz counties.

Salud HMO y Más Network – Available in Orange County and select ZIP codes of Kern, Los Angeles, Riverside, San Diego, and San Bernardino counties.



Los Angeles County



This listing is a general guide only and is subject to change. For an up-to-date listing, please visit www.healthnet.com > [ProviderSearch](#).

Participating physician groups	Full	WholeCare	SmartCare	Salud HMO y Más
Access IPA	✓	✓	✓	
Accountable Health Care IPA	✓	✓		✓
Advantage Health Network	✓	✓	✓	
Alamitos IPA	✓	✓		
All Care Medical Group, Inc.	✓	✓	✓	✓
Allied Health Care Providers, Inc.	✓	✓	✓	✓
Allied Pacific Chinatown Service Center	✓	✓	✓	✓
Allied Pacific of California IPA	✓	✓	✓	✓
Allied Pacific of California IPA – East LA	✓	✓	✓	✓
Allied Physicians of California – CVIP	✓	✓	✓	✓
Allied Physicians of California (Greater Orange County Medical Group)	✓	✓	✓	
Alpha Care Medical Group	✓			✓
AltaMed Medical and Dental Group – 1st Street	✓	✓		✓
AltaMed Medical and Dental Group – Bell	✓	✓		✓
AltaMed Medical and Dental Group – Boyle Heights	✓	✓		✓
AltaMed Medical and Dental Group – South Gate	✓	✓		✓
AltaMed Medical and Dental Group – West Covina	✓	✓		✓
AltaMed Medical Group – Commerce	✓	✓		✓
AltaMed Medical Group – Huntington Park	✓	✓		✓
AltaMed Medical Group – Montebello	✓	✓		✓
AltaMed Medical Group – Pico Rivera, Passons	✓	✓		✓
AltaMed Medical Group – Pico Rivera, Slauson	✓	✓		✓
AltaMed Medical Group – Westlake	✓	✓		✓
AltaMed Medical Group at Hollywood Presbyterian Med Ctr	✓	✓		✓
Angeles IPA	✓	✓	✓	✓
Arroyo Seco Medical Group (A Division of Healthcare Partners)	✓	✓	✓	
Arroyo Vista ESH (Allied Pacific IPA)	✓	✓	✓	✓
Arroyo Vista ESV (Allied Pacific IPA)	✓	✓	✓	✓
Arroyo Vista HP (Allied Pacific IPA)	✓	✓	✓	✓
Arroyo Vista LD (Allied Pacific IPA)	✓	✓	✓	✓
Arroyo Vista LH (Allied Pacific IPA)	✓	✓	✓	✓
Associated Hispanic Physicians of Southern California	✓	✓	✓	✓
Axminster Medical Group – Good Samaritan	✓	✓		
Axminster Medical Group – Olympia IPA	✓	✓		
Axminster Medical Group/Providence Medical Associates	✓	✓		
Bella Vista Medical Group IPA	✓	✓	✓	
Brookshire IPA	✓	✓		

(continued)

Los Angeles County (continued)

Participating physician groups	Full	WholeCare	SmartCare	Salud HMO y Más
Cedars-Sinai Health Associates	✓			
Cedars-Sinai Health Associates – Marina del Rey	✓			
Cedars-Sinai Med Care Fnd (Medical Group of Beverly Hills – Olympic)	✓			
Cedars-Sinai Med Care Fnd (Medical Group of Beverly Hills – Robertson)	✓			
Centinela Valley IPA Medical Group, Inc.	✓	✓		
Citrus Valley Physician Group	✓	✓	✓	
Community Family Care – San Fernando Valley	✓	✓		✓
Community Family Care IPA – Antelope Valley	✓	✓		
Community Family Care IPA – Los Angeles	✓	✓		✓
Community Medical Group – Agoura	✓	✓	✓	
Community Medical Group – IPA Physicians	✓	✓		
Community Medical Group – Simi Valley	✓	✓		
Community Medical Group – Thousand Oaks	✓	✓		
Community Medical Group – West Hills	✓	✓	✓	
Crown City Medical Group	✓	✓		✓
Eastland Medical Group	✓	✓	✓	
Eastland Medical Group – Glendale	✓	✓	✓	
Eastland Medical Group – Glendora Division	✓	✓	✓	
Exceptional Care – Avalon Medical Group of Whittier, Inc.	✓	✓	✓	✓
Exceptional Care – Greater Los Angeles Healthcare	✓	✓	✓	✓
Exceptional Care – Greater San Gabriel Valley Physicians	✓	✓	✓	✓
Exceptional Care – Huntington Park Mission Medical Group	✓	✓	✓	✓
Exceptional Care – Mabuhay Medical Group	✓	✓	✓	
Exceptional Care – Pasadena Primary Care Physicians	✓	✓	✓	✓
Exceptional Care – Serendib Healthways, Inc.	✓	✓	✓	✓
Facey Med Fnd – Valencia Specialty & Women’s Health Ctr.	✓	✓		
Facey Medical Foundation – Burbank	✓	✓		
Facey Medical Foundation – Canyon Country	✓	✓		
Facey Medical Foundation – Copperhill	✓	✓		
Facey Medical Foundation – Mission Hills	✓	✓		
Facey Medical Foundation – Northridge	✓	✓		
Facey Medical Foundation – Porter Ranch	✓	✓		
Facey Medical Foundation – Tarzana	✓	✓		
Facey Medical Foundation – Tarzana II	✓	✓		
Facey Medical Foundation – Valencia	✓	✓		
Family Care Specialists – ELA1	✓	✓	✓	
Family Care Specialists – ELA2	✓	✓	✓	
Family Care Specialists – Highland Park	✓	✓	✓	
Family Care Specialists – Montebello	✓	✓	✓	

(continued)

Los Angeles County (continued)

Participating physician groups	Full	WholeCare	SmartCare	Salud HMO y Más
Family Choice Medical Group	✓	✓		
Family Health Alliance	✓	✓		✓
Fountain Valley Premier IPA	✓	✓		
Global Care Medical Group, IPA	✓			✓
Good Samaritan Medical Practice Association	✓	✓	✓	✓
Greater Covina – Regal Medical Group	✓	✓	✓	
Greater San Gabriel Valley Physicians	✓	✓	✓	✓
Health Care LA, IPA	✓	✓		
HealthCare Partners – South Bay	✓	✓	✓	
HealthCare Partners – Valencia	✓	✓	✓	
HealthCare Partners IPA – Arcadia	✓	✓	✓	
HealthCare Partners IPA – Arta Health Network	✓	✓	✓	✓
HealthCare Partners IPA – East Los Angeles	✓	✓	✓	
HealthCare Partners IPA – East West	✓	✓	✓	
HealthCare Partners IPA – Glendale	✓	✓	✓	
HealthCare Partners IPA – Little Company of Mary	✓	✓	✓	
HealthCare Partners IPA – Long Beach	✓	✓	✓	
HealthCare Partners IPA – Los Angeles County	✓	✓	✓	
HealthCare Partners IPA – Montebello	✓	✓	✓	
HealthCare Partners IPA – Northridge Medical Group	✓	✓	✓	
HealthCare Partners IPA – Pasadena	✓	✓	✓	
HealthCare Partners IPA – San Fernando Valley	✓	✓	✓	
HealthCare Partners IPA – South Bay	✓	✓	✓	
HealthCare Partners IPA – South Coast	✓	✓	✓	
HealthCare Partners IPA – Westside	✓	✓	✓	
HealthCare Partners Medical Group	✓	✓	✓	
HealthCare Partners Medical Group – Airport Plaza	✓	✓	✓	
HealthCare Partners Medical Group – Alhambra	✓	✓	✓	
HealthCare Partners Medical Group – Arcadia	✓	✓	✓	
HealthCare Partners Medical Group – Compton	✓	✓	✓	
HealthCare Partners Medical Group – Downey	✓	✓	✓	
HealthCare Partners Medical Group – East Los Angeles	✓	✓	✓	
HealthCare Partners Medical Group – El Monte	✓	✓	✓	
HealthCare Partners Medical Group – Glen Oaks	✓	✓	✓	
HealthCare Partners Medical Group – Glendale	✓	✓	✓	
HealthCare Partners Medical Group – Glendora	✓	✓	✓	
HealthCare Partners Medical Group – Huntington Park	✓	✓	✓	
HealthCare Partners Medical Group – LB Alamos Ave	✓	✓	✓	
HealthCare Partners Medical Group – Long Beach	✓	✓	✓	
HealthCare Partners Medical Group – Los Angeles	✓	✓	✓	
HealthCare Partners Medical Group/Magan – Covina	✓	✓	✓	

(continued)

Los Angeles County (continued)

Participating physician groups	Full	WholeCare	SmartCare	Salud HMO y Más
HealthCare Partners Medical Group – Mission Hills	✓	✓	✓	
HealthCare Partners Medical Group – Monrovia	✓	✓	✓	
HealthCare Partners Medical Group – Montebello	✓	✓	✓	
HealthCare Partners Medical Group – Monterey Park	✓	✓	✓	
HealthCare Partners Medical Group – Pasadena Main	✓	✓	✓	
HealthCare Partners Medical Group – San Gabriel	✓	✓	✓	
HealthCare Partners Medical Group – Temple City	✓	✓	✓	
HealthCare Partners Medical Group – Van Nuys	✓	✓	✓	
HealthCare Partners Medical Group – West Hills	✓	✓	✓	
Herald Christian Health Center	✓	✓	✓	✓
Heritage Health Care	✓	✓	✓	
Heritage Provider Network	✓	✓	✓	
High Desert Medical Group	✓	✓	✓	
Korean American Medical Group	✓	✓	✓	
Lakeside Medical Group – Burbank/North Hollywood	✓	✓	✓	
Lakeside Medical Group – Central Valley	✓	✓	✓	
Lakeside Medical Group – Glendale	✓	✓	✓	
Lakeside Medical Group – North Valley	✓	✓	✓	
Lakeside Medical Group – Santa Clarita	✓	✓	✓	
Lakeside Medical Group – Verdugo	✓	✓	✓	
Lakewood IPA	✓	✓		
Los Angeles Medical Center IPA	✓	✓	✓	✓
Martin Luther King Jr. Community Medical Group – Compton	✓	✓	✓	✓
Martin Luther King Jr. Community Medical Group – Los Angeles	✓	✓	✓	✓
MemorialCare Medical Foundation – Torrance	✓	✓		
MemorialCare Medical Group	✓	✓		
MemorialCare Medical Group – LB/Bellflower	✓	✓		
MemorialCare Medical Group – Spring	✓	✓		
Mid Cities, IPA	✓	✓	✓	
Monarch Healthcare, a MG, Inc.	✓	✓		
Omnicare Medical Group	✓	✓	✓	
Phys Assoc Greater San Gabriel Valley (Beverly/Div HCP)	✓	✓	✓	
Phys Assoc Greater San Gabriel Valley (Citrus/Div HCP)	✓	✓	✓	
Phys Assoc Greater San Gabriel Valley (Glendale/Verdugo/Div HCP)	✓	✓	✓	
Phys Assoc Greater San Gabriel Valley (Pasadena/Arcadia/Div HCP)	✓	✓	✓	
Phys Assoc Greater San Gabriel Valley (San Gabriel/Div HCP)	✓	✓	✓	
PIH Health Physicians – Affiliated Providers	✓			
PIH Health Physicians – Medical Group	✓			

(continued)

Los Angeles County (continued)

<i>Participating physician groups</i>	<i>Full</i>	<i>WholeCare</i>	<i>SmartCare</i>	<i>Salud HMO y Más</i>
Pioneer Provider Network, A Medical Group, Inc.	✓	✓	✓	
Premier Physician Network	✓	✓		
Premier Physician Network – Valley Division	✓	✓		
Providence Care Network	✓	✓		
Prudent Medical Group	✓	✓	✓	
Regal Medical Group – Glendale Physicians Alliance	✓	✓	✓	
Regal Medical Group of South Los Angeles	✓	✓	✓	
Regal Medical Group of the San Fernando Valley	✓	✓	✓	
Saint John’s Health Clinic	✓	✓		
San Gabriel Valley Regal Medical Group	✓	✓	✓	
Seoul Medical Group, IPA	✓	✓	✓	
Serra Community Medical Clinic	✓	✓	✓	✓
Sierra Medical Group	✓	✓	✓	
Sierra Medical Group – Santa Clarita	✓	✓	✓	
St. Mary IPA	✓	✓		
St. Vincent IPA Medical Group	✓	✓	✓	
T.H.E. Clinic Wellness – Hawthorne – HCLA	✓			
The Children’s Clinic – Bellflower	✓	✓		✓
The Children’s Clinic – Long Beach	✓	✓		✓
Torrance Health IPA	✓	✓	✓	
UCLA – Primary Care Network	✓			
UCLA Medical Group	✓			
UCLA Medical Group – Northwest	✓			
UCLA Medical Group – Santa Monica	✓			
UCLA Medical Group – Santa Monica Bay Physicians	✓			
UCLA Medical Group – South Bay	✓			
West Covina Medical Clinic, Inc.	✓	✓	✓	

(continued)

Los Angeles County (continued)

Important! This listing is a general guide only and is subject to change. It's important to note that PPGs and PCPs typically affiliate with specific hospitals. **Please confirm that the PPG and/or PCP is affiliated with the hospital listed prior to selecting a PCP.**

<i>Participating hospitals</i>	<i>Full</i>	<i>WholeCare</i>	<i>SmartCare</i>	<i>Salud HMO y Más</i>
Alhambra Hospital Medical Center	✓	✓	✓	✓
Antelope Valley Hospital	✓	✓	✓	
Beverly Hospital	✓	✓	✓	✓
California Hospital Medical Center	✓	✓	✓	✓
Cedars-Sinai Medical Center	✓			
Centinela Hospital Medical Center	✓	✓	✓	
Childrens Hospital of Los Angeles	✓	✓		
Coast Plaza Hospital	✓	✓	✓	
Community Hospital of Long Beach	✓			✓
East Los Angeles Doctors Hospital	✓	✓	✓	✓
Foothill Presbyterian Hospital – Morris L. Johnston Memorial	✓	✓	✓	
Garfield Medical Center	✓	✓	✓	✓
Glendale Adventist Medical Center	✓	✓	✓	
Glendale Memorial Hospital and Health Center	✓	✓	✓	
Glendora Community Hospital	✓	✓	✓	
Good Samaritan Hospital	✓	✓	✓	
Greater El Monte Community Hospital	✓	✓	✓	✓
Henry Mayo Newhall Memorial Hospital	✓	✓	✓	
Hollywood Presbyterian Medical Center	✓	✓	✓	✓
Huntington Memorial Hospital	✓	✓	✓	
Inter-Community, Citrus Valley Medical Centers	✓	✓	✓	
Lakewood Regional Medical Center	✓	✓	✓	✓
Little Company of Mary Hospital	✓	✓	✓	
Little Company of Mary Medical Center San Pedro	✓	✓		
Long Beach Memorial Medical Center	✓	✓	✓	
Los Angeles Community Hospital	✓			
Marina Del Rey Hospital	✓		✓	
Memorial Hospital of Gardena	✓	✓	✓	✓
Methodist Hospital of Southern California	✓	✓	✓	
Miller Children's Hospital	✓	✓		
Monterey Park Hospital	✓	✓	✓	✓
Northridge Hospital Medical Center, Roscoe Boulevard Campus	✓	✓	✓	
Norwalk Community	✓			
Olympia Medical Center	✓	✓		
Pacifica Hospital of the Valley	✓	✓	✓	✓
Palmdale Regional Medical Center	✓	✓	✓	
PIH Health Hospital – Downey	✓	✓	✓	✓
PIH Health Hospital – Whittier	✓			

(continued)

Los Angeles County (continued)

<i>Participating hospitals</i>	<i>Full</i>	<i>WholeCare</i>	<i>SmartCare</i>	<i>Salud HMO y Más</i>
Pomona Valley Hospital Medical Center	✓	✓	✓	
Providence Holy Cross Medical Center	✓	✓	✓	
Providence Saint John's Health Center	✓			
Providence Saint Joseph Medical Center	✓	✓	✓	
Providence Tarzana Medical Center	✓	✓	✓	
Queen of the Valley, Citrus Valley Medical Center	✓	✓	✓	
Ronald Reagan UCLA Medical Center	✓			
San Dimas Community Hospital	✓	✓	✓	
San Gabriel Valley Medical Center	✓	✓	✓	✓
Santa Monica UCLA Medical Center and Orthopaedic Hospital	✓			
Southern California Hospital at Culver City	✓	✓	✓	
Southern California Hospital at Hollywood	✓	✓	✓	
Southern California Hospital at Van Nuys	✓	✓	✓	
St. Francis Medical Center	✓	✓	✓	
St. Mary Medical Center	✓	✓	✓	
St. Vincent Medical Center	✓	✓	✓	
Torrance Memorial Medical Center	✓	✓	✓	
USC Verdugo Hills Hospital LLC	✓	✓	✓	
Valley Presbyterian Hospital	✓	✓	✓	✓
West Covina Medical Center	✓	✓	✓	✓
West Hills Hospital & Medical Center	✓	✓	✓	
White Memorial Medical Center	✓	✓	✓	
Whittier Hospital Medical Center	✓	✓	✓	✓

For more information, please contact:

Customer Contact Center

1-800-522-0088

www.healthnet.com

Important! This listing is a general guide only and is subject to change. It's important to note that PPGs and PCPs typically affiliate with specific hospitals. **Please confirm that the PPG and/or PCP is affiliated with the hospital listed prior to selecting a PCP.**