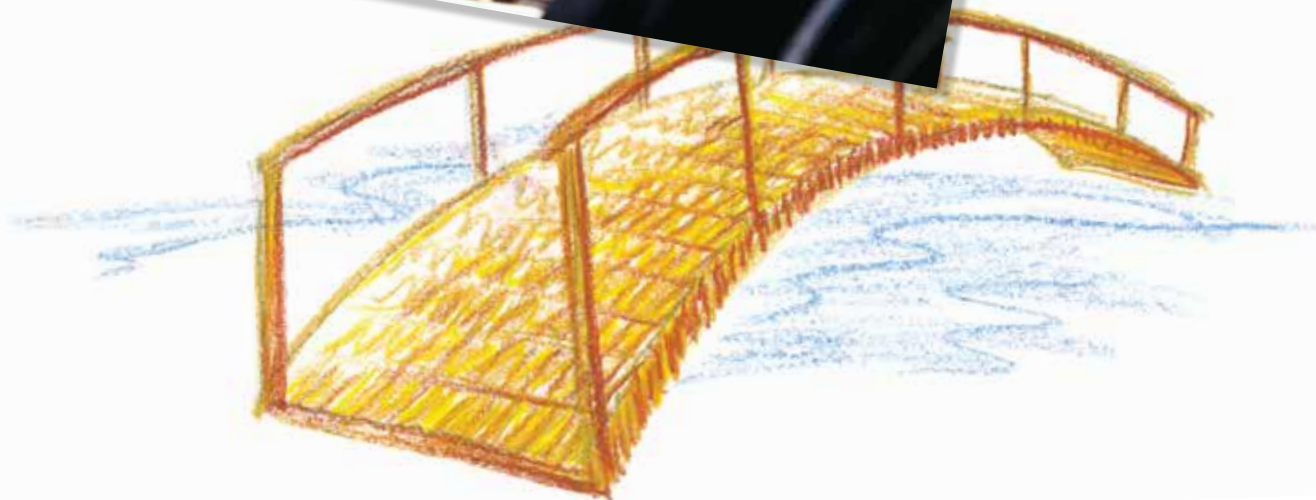


Network Comparison List

Effective February 1, 2018



Geoffrey Gomez,
Health Net
*Keeping our members
informed with all the
latest plan updates.*





Definition of Terms

Participating Physician Group (PPG) –

A group of physicians, who are organized as a legal entity, that has an agreement in effect with Health Net to provide medical care to Health Net members. They are sometimes referred to as a “contracting physician group” or a “medical group.” An individual practice association may also be a physician group.

Primary Care Physician (PCP) – A physician who coordinates and controls the delivery of covered services and supplies to the member. PCPs include general and family practitioners, internists, pediatricians, and obstetricians/gynecologists.

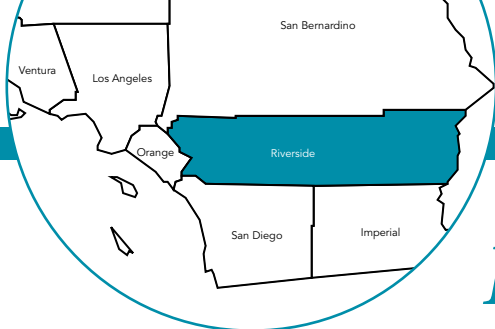
Participating Hospitals – A member’s PCP may find it necessary to refer the member to a hospital for further care on either an inpatient or outpatient basis. The member will usually be hospitalized where the PCP has admitting privileges. Log in to www.healthnet.com/providersearch for a list of hospitals where the PCP has admitting privileges. **Note:** The PCP must first be contacted for initial treatment and consultation before you receive any care or treatment through a hospital. Admission to, and treatment rendered by, any hospital must be authorized by your selected PCP. **If you feel that you are experiencing an emergency, call 911 immediately or go to the nearest ER.**

Full and WholeCare HMO networks –

Available in all or parts of Alameda, Alpine, Amador, Butte, Calaveras, Colusa, Contra Costa, Del Norte, El Dorado, Fresno, Glenn, Humboldt, Kern, Kings, Lake, Lassen, Los Angeles, Madera, Mariposa, Marin, Mendocino, Merced, Modoc, Monterey, Napa, Nevada, Orange, Placer, Plumas, Riverside, Sacramento, San Benito, San Bernardino, San Diego, San Francisco, San Joaquin, San Luis Obispo, San Mateo, Santa Barbara, Santa Clara, Santa Cruz, Shasta, Sierra, Siskiyou, Solano, Sonoma, Stanislaus, Sutter, Tehama, Trinity, Tulare, Tuolumne, Ventura, Yolo, and Yuba counties.

SmartCare HMO Network – Available in all or parts of Los Angeles, Marin, Orange, Riverside, San Bernardino, San Diego, Santa Clara, and Santa Cruz counties.

Salud HMO y Más Network – Available in Orange County and select ZIP codes of Kern, Los Angeles, Riverside, San Diego, and San Bernardino counties.



Riverside County



This listing is a general guide only and is subject to change. For an up-to-date listing, please visit www.healthnet.com > ProviderSearch.

<i>Participating physician groups</i>	<i>Full</i>	<i>WholeCare</i>	<i>SmartCare</i>	<i>Salud HMO y Más</i>
Alpha Care Medical Group – Riverside	✓			✓
Beaver Medical Group – Banning	✓	✓	✓	
Cal Care IPA, Inc.	✓	✓		
Desert Oasis Healthcare	✓	✓		
Empire Physicians Medical Group	✓			
Hemet Community Medical Group	✓	✓		
Hemet Community Medical Group – Menifee Valley	✓	✓		
Hemet Community Medical Group – Temecula Valley	✓	✓		
LaSalle Medical Associates – Riverside	✓	✓	✓	✓
Los Angeles Medical Center IPA	✓	✓	✓	✓
PrimeCare Medical Group of Corona, Inc.	✓	✓	✓	
PrimeCare Medical Group of Hemet Valley, Inc.	✓	✓	✓	
PrimeCare Medical Group of Riverside, Inc.	✓	✓	✓	
PrimeCare Medical Group of Sun City, Inc.	✓	✓	✓	
PrimeCare Medical Group of Temecula, Inc.	✓	✓	✓	
Regal Medical Group of Riverside County	✓	✓		
Riverside Medical Clinic	✓	✓		
Riverside Medical Clinic – Canyon Springs	✓	✓		
Riverside Medical Clinic – Parkview	✓	✓		
Riverside Physician Network	✓			
Sharp Graybill Temecula	✓	✓	✓	
Tri-Valley Medical Group	✓	✓	✓	
Vantage Medical Group (MMG)	✓	✓		
Vantage Medical Group – RI	✓	✓		
Vantage Medical Group – San Diego	✓	✓		
Vantage Medical Group – SB	✓	✓		

Important! This listing is a general guide only and is subject to change. It's important to note that PPGs and PCPs typically affiliate with specific hospitals. **Please confirm that the PPG and/or PCP is affiliated with the hospital listed prior to selecting a PCP.**

<i>Participating hospitals</i>	<i>Full</i>	<i>WholeCare</i>	<i>SmartCare</i>	<i>Salud HMO y Más</i>
Corona Regional Medical Center	✓	✓	✓	
Desert Regional Medical Center	✓	✓	✓	
Eisenhower Medical Center	✓	✓		
Hemet Valley Medical Center	✓	✓	✓	
John F. Kennedy Memorial Hospital	✓	✓	✓	
Menifee Valley Medical Center	✓	✓		
Parkview Community Hospital Medical Center	✓	✓	✓	✓
Riverside Community Hospital	✓	✓	✓	
San Geronio Memorial Hospital	✓	✓	✓	
Southwest Healthcare System – Inland Valley Medical Center	✓	✓	✓	
Southwest Healthcare System – Rancho Springs Medical Center	✓	✓	✓	

For more information, please contact:

Customer Contact Center

1-800-522-0088

www.healthnet.com

Important! This listing is a general guide only and is subject to change. It's important to note that PPGs and PCPs typically affiliate with specific hospitals. **Please confirm that the PPG and/or PCP is affiliated with the hospital listed prior to selecting a PCP.**