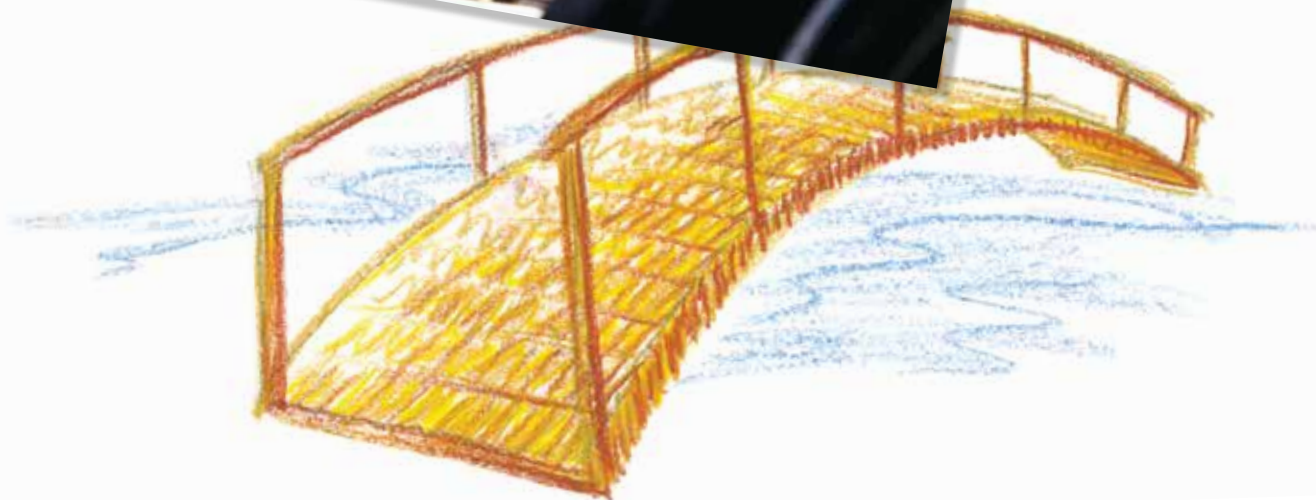


Network Comparison List

Effective February 1, 2018



Geoffrey Gomez,
Health Net
*Keeping our members
informed with all the
latest plan updates.*





Definition of Terms

Participating Physician Group (PPG) –

A group of physicians, who are organized as a legal entity, that has an agreement in effect with Health Net to provide medical care to Health Net members. They are sometimes referred to as a “contracting physician group” or a “medical group.” An individual practice association may also be a physician group.

Primary Care Physician (PCP) – A physician who coordinates and controls the delivery of covered services and supplies to the member. PCPs include general and family practitioners, internists, pediatricians, and obstetricians/gynecologists.

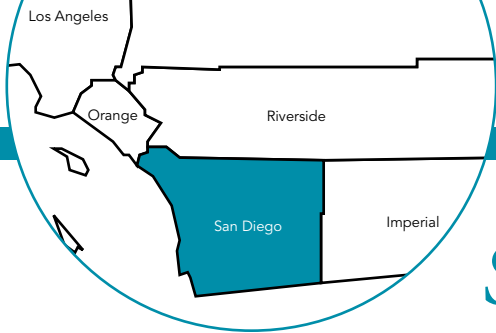
Participating Hospitals – A member’s PCP may find it necessary to refer the member to a hospital for further care on either an inpatient or outpatient basis. The member will usually be hospitalized where the PCP has admitting privileges. Log in to www.healthnet.com/providersearch for a list of hospitals where the PCP has admitting privileges. **Note:** The PCP must first be contacted for initial treatment and consultation before you receive any care or treatment through a hospital. Admission to, and treatment rendered by, any hospital must be authorized by your selected PCP. **If you feel that you are experiencing an emergency, call 911 immediately or go to the nearest ER.**

Full and WholeCare HMO networks –

Available in all or parts of Alameda, Alpine, Amador, Butte, Calaveras, Colusa, Contra Costa, Del Norte, El Dorado, Fresno, Glenn, Humboldt, Kern, Kings, Lake, Lassen, Los Angeles, Madera, Mariposa, Marin, Mendocino, Merced, Modoc, Monterey, Napa, Nevada, Orange, Placer, Plumas, Riverside, Sacramento, San Benito, San Bernardino, San Diego, San Francisco, San Joaquin, San Luis Obispo, San Mateo, Santa Barbara, Santa Clara, Santa Cruz, Shasta, Sierra, Siskiyou, Solano, Sonoma, Stanislaus, Sutter, Tehama, Trinity, Tulare, Tuolumne, Ventura, Yolo, and Yuba counties.

SmartCare HMO Network – Available in all or parts of Los Angeles, Marin, Orange, Riverside, San Bernardino, San Diego, Santa Clara, and Santa Cruz counties.

Salud HMO y Más Network – Available in Orange County and select ZIP codes of Kern, Los Angeles, Riverside, San Diego, and San Bernardino counties.



San Diego County



This listing is a general guide only and is subject to change. For an up-to-date listing, please visit www.healthnet.com > [ProviderSearch](#).

Participating physician groups	Full	WholeCare	SmartCare	Salud HMO y Más
Arch Health Partners				✓
Cassidy Medical Group	✓	✓		✓
Encompass Medical Group	✓	✓		
Greater Tri-Cities IPA	✓	✓		✓
Mercy Physicians Medical Group	✓	✓		
Mid-County Physicians Medical Group	✓	✓		✓
Noble AMA IPA	✓	✓		
Primary Care Associated Medical Group	✓	✓		✓
Rady Children's Health Network	✓	✓	✓	✓
Scripps Clinic – Anderson	✓			
Scripps Clinic – Carmel Valley	✓			
Scripps Clinic – Del Mar	✓			
Scripps Clinic – Encinitas	✓			
Scripps Clinic – La Jolla	✓			
Scripps Clinic – Mission Valley	✓			
Scripps Clinic – Rancho Bernardo	✓			
Scripps Clinic – Rancho San Diego	✓			
Scripps Clinic – Santee	✓			
Scripps Clinic – Torrey Pines	✓			
Scripps Coastal Medical Center – Carlsbad	✓			
Scripps Coastal Medical Center – Eastlake	✓			
Scripps Coastal Medical Center – Encinitas	✓			
Scripps Coastal Medical Center – Escondido	✓			
Scripps Coastal Medical Center – Hillcrest	✓			
Scripps Coastal Medical Center – Oceanside	✓			
Scripps Coastal Medical Center – Solana Beach	✓			
Scripps Coastal Medical Center – Vista	✓			
Scripps Physicians Medical Group	✓	✓		✓
Sharp Community Medical Group – Arch	✓	✓	✓	
Sharp Community Medical Group – Graybill	✓	✓	✓	
Sharp Community Medical Group at San Diego	✓	✓	✓	
Sharp Community Medical Group – Inland North	✓	✓	✓	
Sharp Graybill Temecula	✓	✓		
Sharp Rees-Stealy Medical Group	✓	✓	✓	
Sharp Rees-Stealy Medical Group – Chula Vista	✓	✓	✓	
Sharp Rees-Stealy Medical Group – La Mesa	✓	✓	✓	
Sharp Rees-Stealy Medical Group – Mira Mesa	✓	✓	✓	
Sharp Rees-Stealy Medical Group – Rancho Bernardo	✓	✓	✓	
Sharp Rees-Stealy Medical Group – San Diego	✓	✓	✓	
UCSD – Villa La Jolla Dr. Peds	✓	✓		
UCSD Family Med 4th & Lewis	✓	✓		

(continued)

San Diego County (continued)

<i>Participating physician groups</i>	<i>Full</i>	<i>WholeCare</i>	<i>SmartCare</i>	<i>Salud HMO y Más</i>
UCSD Family Med Genesee	✓	✓		
UCSD Family Med Scripps Ranch	✓	✓		
UCSD Front St. Internal Med.	✓	✓		
UCSD Frost St. Peds/Adol.Med.	✓	✓		
UCSD Healthcare Network	✓	✓		
UCSD Internal Med 4th & Lewis	✓	✓		
UCSD Internal Med La Jolla	✓	✓		
UCSD Internal Med Sorrento Valley	✓	✓		
UCSD Perlman Geriatrics/Internal Med	✓	✓		
Vantage Medical Group – San Diego	✓	✓		

Important! This listing is a general guide only and is subject to change. It's important to note that PPGs and PCPs typically affiliate with specific hospitals. **Please confirm that the PPG and/or PCP is affiliated with the hospital listed prior to selecting a PCP.**

<i>Participating hospitals</i>	<i>Full</i>	<i>WholeCare</i>	<i>SmartCare</i>	<i>Salud HMO y Más</i>
Alvarado Hospital Medical Center	✓	✓		
Palomar Medical Center – Downtown Escondido	✓	✓	✓	✓
Palomar Medical Center – Escondido	✓	✓	✓	
Palomar Medical Center – Poway	✓	✓	✓	✓
Rady Children's Hospital – San Diego	✓	✓	✓	✓
Scripps Green Hospital	✓			
Scripps Memorial Hospital – Encinitas	✓	✓		✓
Scripps Memorial Hospital – La Jolla	✓	✓		✓
Scripps Mercy Hospital	✓	✓		
Scripps Mercy Hospital – Chula Vista	✓			
Sharp Chula Vista Medical Center	✓	✓	✓	
Sharp Coronado Hospital	✓	✓	✓	
Sharp Grossmont Hospital	✓	✓	✓	
Sharp Mary Birch Hospital for Women and Newborns	✓	✓	✓	
Sharp Memorial Hospital	✓	✓	✓	
Tri-City Medical Center	✓	✓		✓
UCSD Medical Center – Hillcrest	✓	✓		✓
UCSD Thornton Hospital	✓	✓		✓

For more information, please contact:

Customer Contact Center

1-800-522-0088

www.healthnet.com

Important! This listing is a general guide only and is subject to change. It's important to note that PPGs and PCPs typically affiliate with specific hospitals. **Please confirm that the PPG and/or PCP is affiliated with the hospital listed prior to selecting a PCP.**